

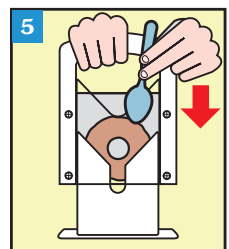
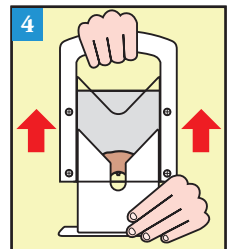
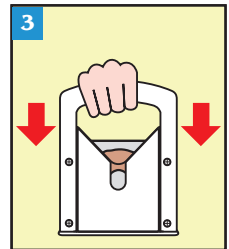
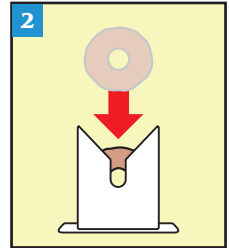
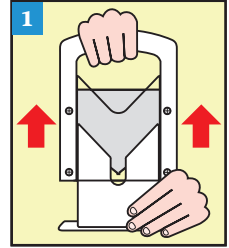
THE ORIGINAL BAGEL GUILLOTINE®

USE & CARE INSTRUCTIONS

Please read all the information in this instruction sheet before using the Bagel Guillotine®.

Although the Bagel Guillotine® makes cutting bagels simple, safe and speedy, we urge caution. **THE BLADE IS EXTREMELY SHARP!**

- 1) Remove the handle portion of the Bagel Guillotine® from the base by grasping the top of the handle with one hand and holding down the base with the other hand. (See illustration #1).
- 2) Place the bagel in the base. (See illustration #2).
- 3) Position the handle portion of the Bagel Guillotine® directly over the base, with the blade pointing downward. The handle will "sleeve" over the base. Push straight down until the handle portion meets the base. (See illustration #3).
- 4) Holding the bottom of the base with one hand, lift the handle portion up. (See illustration #4).
- 5) Remove your perfectly sliced bagel from the base. If a bagel sticks in the handle portion use a utensil to push down on the bagel from the top. (See illustration #5). **NEVER REACH INTO THE HANDLE PORTION FROM THE BOTTOM! THE BLADE IS EXTREMELY SHARP!**



RECOMMENDATIONS

- **NEVER SLICE FROZEN OR STALE BAGELS AS THEY WILL DULL THE BLADE. SLICE BAGELS BEFORE YOU FREEZE THEM AND THAW FROZEN BAGELS BEFORE SLICING THEM.**
- Steamy, moist or "sticky" bagels may compress or squash during slicing; allow steamy bagels to cool off. Popping a moist or sticky bagel into a toaster oven for a few seconds will insure easiest slicing.
- Flavored bagels (raisin, onion etc.) can leave a sticky residue on the blade. Regular cleaning allows the Bagel Guillotine® to work at maximum efficiency. Acid from some ingredients may stain, but occasional staining or scratches will not affect performance.

CLEANING INSTRUCTIONS

To clean your bagel slicer by hand, use a bottle brush and warm soapy water. **DO NOT** scour with metal pads, steel wool or abrasive cleaners. **NEVER REACH INTO THE HANDLE PORTION. THE BLADE IS EXTREMELY SHARP!**

To clean in a dishwasher, place on the **TOP SHELF. Use care when removing from the dishwasher so as not to reach into the handle portion.**

"We at Larien Products have designed the Bagel Guillotine to be highly functional and safe. We must stress however that the Bagel Guillotine IS NOT A TOY AND SHOULD NEVER BE USED BY CHILDREN OF ANY AGE WITHOUT PROPER ADULT SUPERVISION."

**KEEP OUT OF REACH OF CHILDREN
UNDER THE AGE OF 10.**

L A R I E N
P R O D U C T S

PMB 224, 351 Pleasant Street
Northampton, MA 01060
TEL 800.462.9237 FAX 413.585.0101
email: info@larien.com

© 2010 Larien Products

All Models
#1500 1510, 2500